



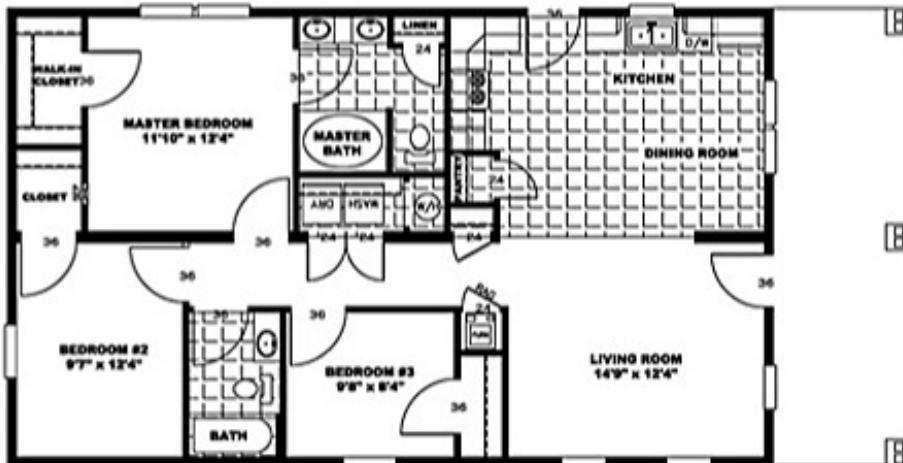
The Stacey II

3 Bedroom, 2 Bath; 1,264 sq. ft.

CENTRAL ADMINISTRATION OFFICE
15 NORTH COURT STREET, P.O. BOX 470
BOWLING GREEN, MISSOURI 63334-0470



- Open floor plan
- Eat-in kitchen
- Large front porch
- Great closet space
- 28'-0" x 52'-0"
- 2x6 Exterior walls
- 2x4 Interior walls
- ENERGY STAR construction
- ENERGY STAR Appliances



For Pricing and Further Information:

NECAC
Debbie Smith
Homeownership Programs Director
dsmith@necac.org
573 324-6622

