



# Aspen

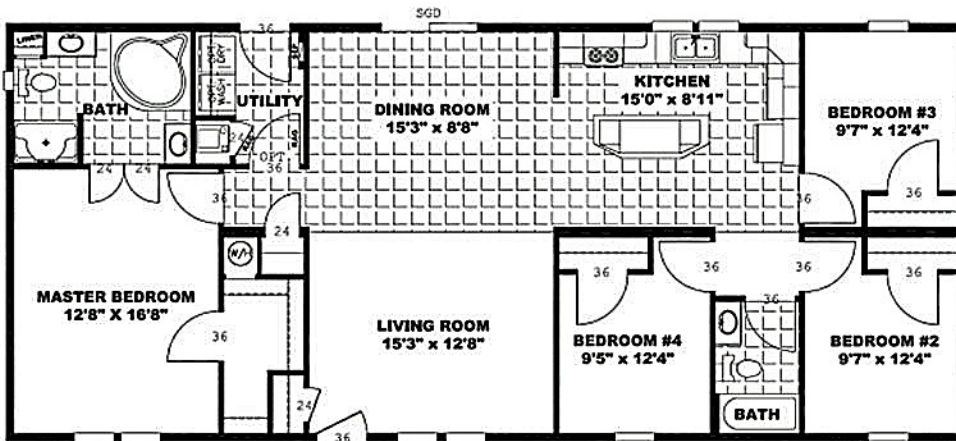
4 Bedroom, 2 Bath; 1,580 sq. ft.

CENTRAL ADMINISTRATION OFFICE

16 NORTH COURT STREET, P.O. BOX 470  
BOWLING GREEN, MISSOURI 63334-0470



- Open floor plan
- Large kitchen
- Split bedroom layout
- Separate shower and soaking tub
- Large dining room
- 28'-0" x 60'-0"
- 2x6 Exterior walls
- 2x4 Interior walls



### For Pricing and Further Information:

NECAC  
 Debbie Smith  
 Homeownership Programs Director  
 dsmith@necac.org  
 573 324-6622

